



SinoTransPFS continues to build its leadership role in providing an integrated cold chain logistics service that is **truly modern, efficient, and cost-effective!**

Food producers and manufacturers, both domestic and MNCs, who need to move their products throughout China, now have a real choice.

中外运普菲斯，将秉承二者优势，一如既往地引领冷链物流产业前进，提供**真正先进的、高效的、物有所值的**综合型服务！

我们将竭诚为在华发展的众多食品生产者、制造商，国内企业和跨国集团提供优质的服务和实在的选择：

Preferred Freezer Services 普菲斯

The 5th largest network of refrigerated warehouses in the world

全球第五大冷冻冷藏仓储运营商

Sinotrans 中外运

China's largest state-owned logistics provider

中国最大国营物流服务提供者



Distribution Range 主要运送范围

Yangtze River Delta 长三角：

Shanghai, Zhejiang, Jiangsu 上海, 浙江, 江苏

North: Beijing, Tianjin, Shandong

华北：北京, 天津, 山东

South/ Inland: Guangdong, Fujian, Hunan, Hubei

华南及内陆：广东, 福建, 湖南, 湖北

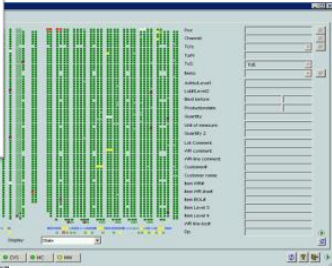
Other areas 其他地区

Facility 冷库	Door 道口	Loading Dock (M ²) 装卸平台 (米 ²)	Capacity (Plts.) 库容 (托盘)			
Lingang, Shanghai 上海临港	37	4,000	40,000			
WGQ, Shanghai 上海外高桥	23	3,000	27,000			
Binhai, Tianjin 天津滨海	22	4,000	32,000			
配备车型 Within Our Fleet of Trucks						
载重量 (吨) Tonnage (Ton.)	3.0	5.0	8.0	15.0	20.0	31.0
温度区间 Temp. Range	-25°C ~ +25°C					



Strategic locations 优越的地理位置

- Close to PVG and TSN around 40 min.
40 分钟抵达浦东机场和天津空港
- Adjacent to key ports:
Waigaoqiao, Tianjin in 10 min. & Yangshan in 30 min.
10 分钟进入外高桥码头, 天津码头; 30 分钟进入洋山码头
- Lingang – Luchaogang Container Railway Station, 15 min.
Tianjin – Tianjin Freight Railway Station, 25 min.
上海临港 - 15 分钟到达芦潮港集装箱火车站
天津滨海 - 25 分钟到达天津货运火车站
- Neighbouring to governmental offices,
Shanghai Pilot Free Trade Zone
毗邻机关办事处, 上海自贸区



Features - Your Preferred Choice for Refrigerated Warehousing & Logistics

我们的优势 — 您理想的冷链仓储和物流拍档及供应链解决方案专家

Warehouse:

- New construction, clean, modern
- State-of-the-industry handling equipment
- Full racking system for organized storage on pallets, never floor-stacked
- Maintained at temperature range 8°C (chilled) to -18°C (frozen)
- Finest MIS systems that provide real-time, accurate inventory control reports
- CIQ-approved for import inspection and rectification services

Logistics:

- Terminal port services, special railway lines, long-haul and LTL
- Strict adherence to controlled-temperature requirements
- Vast network of transport and delivery routes throughout China
- Driver training program assures professional performance level

Import/ Export Shipping:

- Excellent terminal services in America, Europe and Asia
- Fleet of 88 vessels with a 4.7-million D.W.T.
- Topnotch liner services to over 200 regions and countries

仓储:

- 整洁先进，新建设施
- 行业前沿的物料处置设备
- 全货架系统进行货物托盘有效管理，杜绝地面堆放
- 保持理想存储温区-18°C（冷冻）到8°C（冷藏）
- 精良的信息管理系统提供实时的准确库存信息
- 商检指定的进口查验及整改冷库

物流:

- 提供港口、铁路、干线和零担运输
- 严格遵循冷冻冷藏温控管理
- 庞大的物流网络和运输线路辐射全国
- 设立专项培训确保专业品质

进出口航运:

- 完善的专用码头遍及欧、亚、美洲重要港口
- 88艘营运船舶，承运能量高达475万载重吨
- 一流的航运网络覆盖全球200多个地区与国家